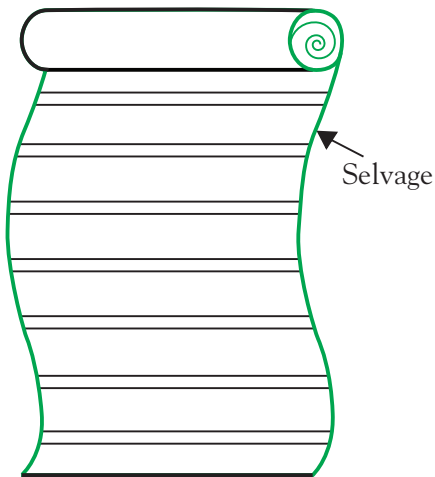


EASTERN ♦ ACCENTS®

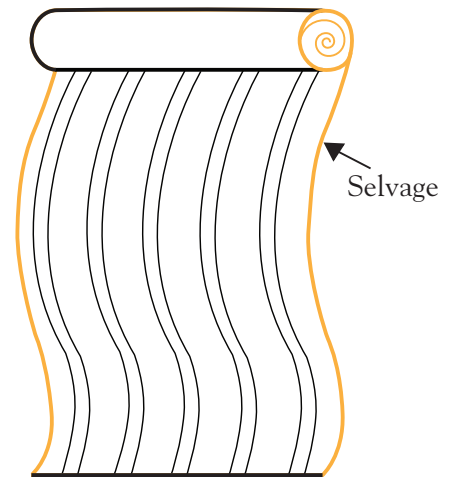
Railroaded vs Up the Roll

Eastern Accents offers a variety of fabrics, ranging from plain solids to bold patterns, plaids to polka dots, and beyond. As you browse, you may notice the terms “Railroaded” and “Up the Roll.” These terms indicate the direction in which their patterns run in relation to the selvage, or the “frayed” edge of the fabric. Here are some helpful hints to differentiate between Railroaded fabrics and Up the Roll fabrics.



RAILROADED (RR)

- Pattern runs horizontally, perpendicular to the selvage
- Commonly used in upholstery

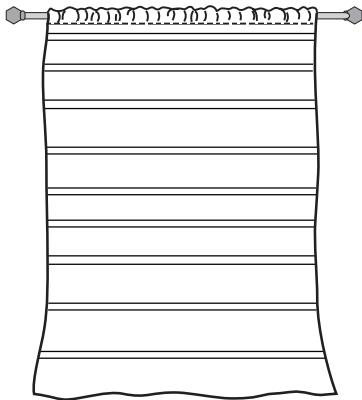
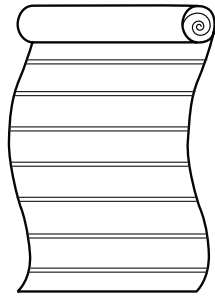


UP THE ROLL

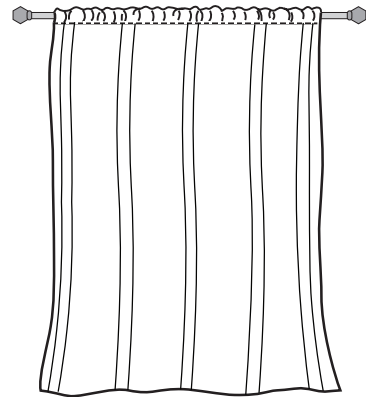
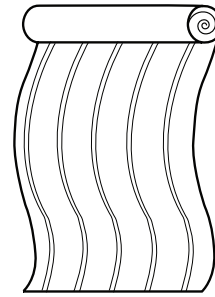
- Pattern runs vertically into the roll/bolt, parallel to the selvage
- Uninterrupted vertical length, limited in terms of width
- Commonly used in drapery
- Prevents horizontal seams in bedding and window treatments

Drapery

Railroaded



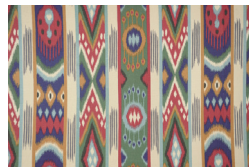
Up the Roll



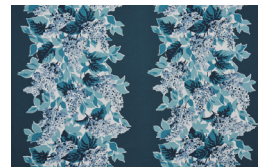
Keely Sunset RR
FB2-302



Mohave Earth RR
FB2-291



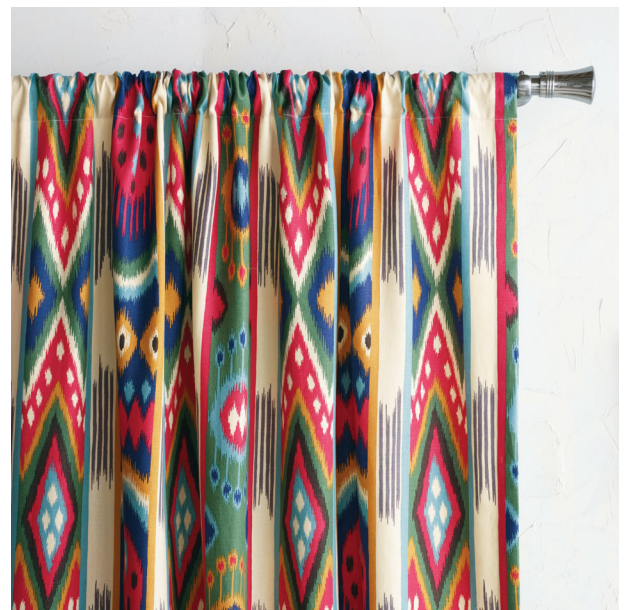
Akela
FB2-389



Lorelai Teal
FB2-276



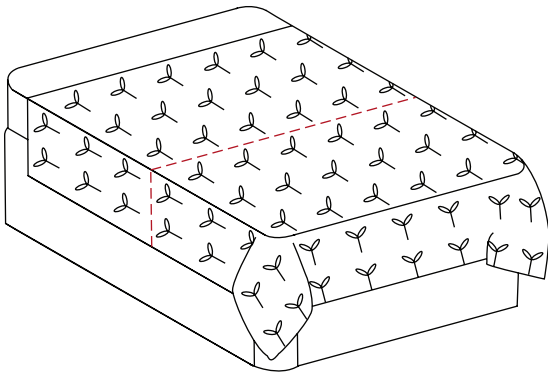
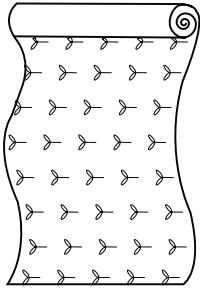
Yara by Niche



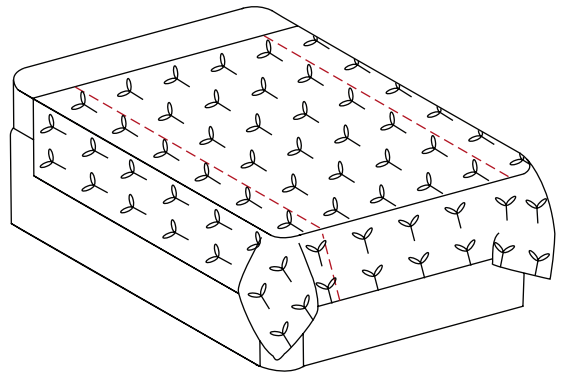
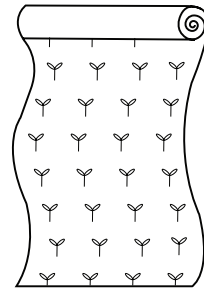
Akela by Niche

Bedding

Railroaded



Up the Roll



Powell RR
FB1-509



Laredo Linen RR
FB2-381



Maritime Marine
FB2-241



Ombre Peacock
FB2-434



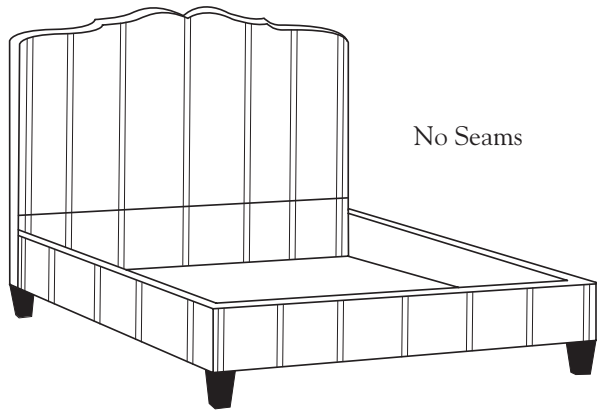
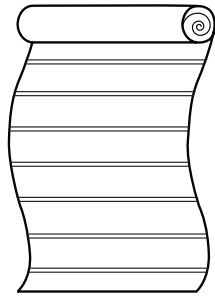
Powell by Eastern Accents



Maritime by Eastern Accents

Upholstery

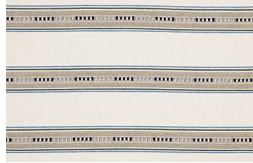
Railroaded



No Seams



Sawyer Indigo RR
FB2-294

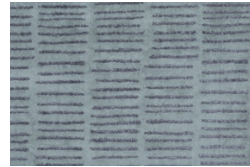
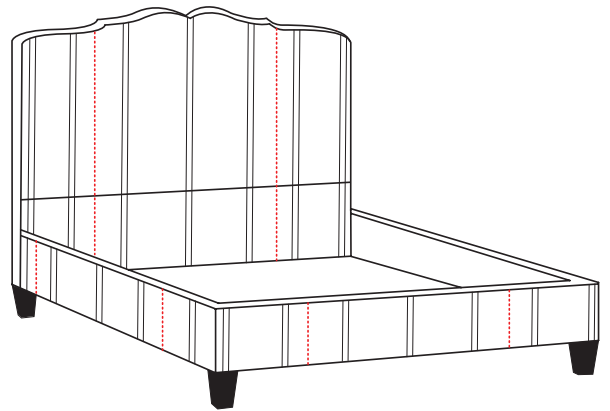
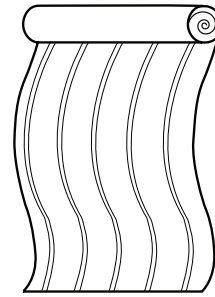


Emerson Natural RR
FB2-282



Arles Bed in Sawyer Indigo RR

Up the Roll



Ora Spruce
FB2-429



Veda Linen
FB2-394



Arles Bed in Ora Spruce